

# \$2,210 - C - 7 Rosebery Avenue, Ottawa

MLS® #X12011392

## \$2,210

2 Bedroom, 2.00 Bathroom,  
Single Family on 0 Acres

4401 - Glebe, Ottawa, Ontario

Beautiful 2021 built energy-efficient coach house located in the rear yard in the heart of The Glebe! Located on a quiet street, this spacious 'smart house' has 2 bed, 2 bath with high quality finishes, beautiful choice of materials & extra soundproofing. Solar-powered & plenty of natural light. It features a private fully finished side yard patio space with gazebo. Includes also a communal patio furniture & BBQ area at the entrance. Pet friendly & walking distance from schools, parks, shopping & transportation. Utilities all in at 175 month and enjoy a cozy ultra private unit with no residential rear-neighbours!  
(id:6289)

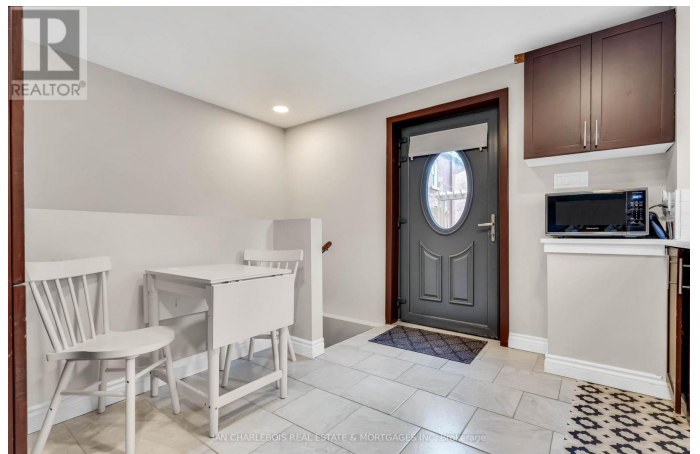


## Essential Information

Listing #	X12011392
Price	\$2,210
Bedrooms	2
Bathrooms	2.00
Acres	0.00
Type	Single Family
Sub-Type	House
Style	Bungalow

## Community Information

Address	C - 7 Rosebery Avenue
Subdivision	4401 - Glebe
City	Ottawa



Province Ontario  
Postal Code K1S1W1

### **Amenities**

Amenities Park, Public Transit  
Utilities Sewer  
Features In suite Laundry  
Parking Spaces 1  
Parking No Garage, Street

### **Interior**

Appliances Dishwasher, Dryer, Microwave, Stove, Washer, Refrigerator  
Heating Natural gas Forced air  
Cooling Central air conditioning  
Has Basement Yes  
# of Stories 1

### **Exterior**

Lot Description 30 x 100 FT  
Foundation Concrete

### **Listing Details**

Listing Office IAN CHARLEBOIS REAL ESTATE & MORTGAGES INC

MLS®, REALTOR®, and the associated logos are trademarks of The Canadian Real Estate Association.