

\$ - 13-15 - 41 Adelaide Street N, London

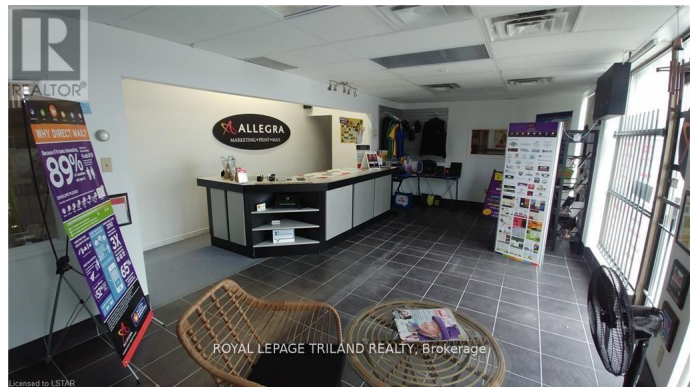
MLS® #X11977576

\$

0 Bedroom, 0.00 Bathroom, 3,824 sqft
Industrial on 0 Acres

South I, London, Ontario

Prime leasing opportunity in the Adelaide Business centre. Located on the West side of Adelaide just North of the River and Park trails. Unit 13-15 (3,824 Sq. Ft.) has partial Adelaide Street exposure. Traffic count is approx. 25,000 cars per day. The space is approx. 25% showroom 75% warehouse with two drive-in loading doors. RSC 1, 3, 4 & 5 zoning allows for many uses. Space is available August 1st, 2025. (id:6289)



Essential Information

Listing #	X11977576
Bathrooms	0.00
Square Footage	3,824
Acres	0.00
Type	Industrial
Sub-Type	Multi-Tenant Industrial

Community Information

Address	13-15 - 41 Adelaide Street N
Subdivision	South I
City	London
Province	Ontario
Postal Code	N5Z3K1

Interior

Heating	Natural gas Other
Cooling	Partially air conditioned



Exterior

Lot Description Unit=40 x 115 FT

Listing Details

Listing Office ROYAL LEPAGE TRILAND REALTY

MLS®, REALTOR®, and the associated logos are trademarks of The Canadian Real Estate Association.