

# \$ - Rear - 2470 Lucknow Drive, Mississauga (northeast)

MLS® #W11937662

\$

0 Bedroom, 1.00 Bathroom, 3,500 sqft  
Industrial

Northeast, Mississauga (northeast), Ontario

Warehousing use only, Perfect Place To Store Your Goods Hassle Free. Rear Warehouse For Sublease with washroom, Truck level loading dock 53-foot access. Utilities To Be Paid By The Tenant. Well, Situated For Easy Access To The Airport And 400 Series Highways, Well-Kept. 1 Truck Dock Available For Use. TMI is \$5.95 (id:6289)

## Essential Information

Listing #	W11937662
Bathrooms	1.00
Square Footage	3,500
Type	Industrial
Sub-Type	Warehouse

## Community Information

Address	Rear - 2470 Lucknow Drive
Subdivision	Northeast
City	Mississauga (northeast)
Province	Ontario
Postal Code	L5S1J9

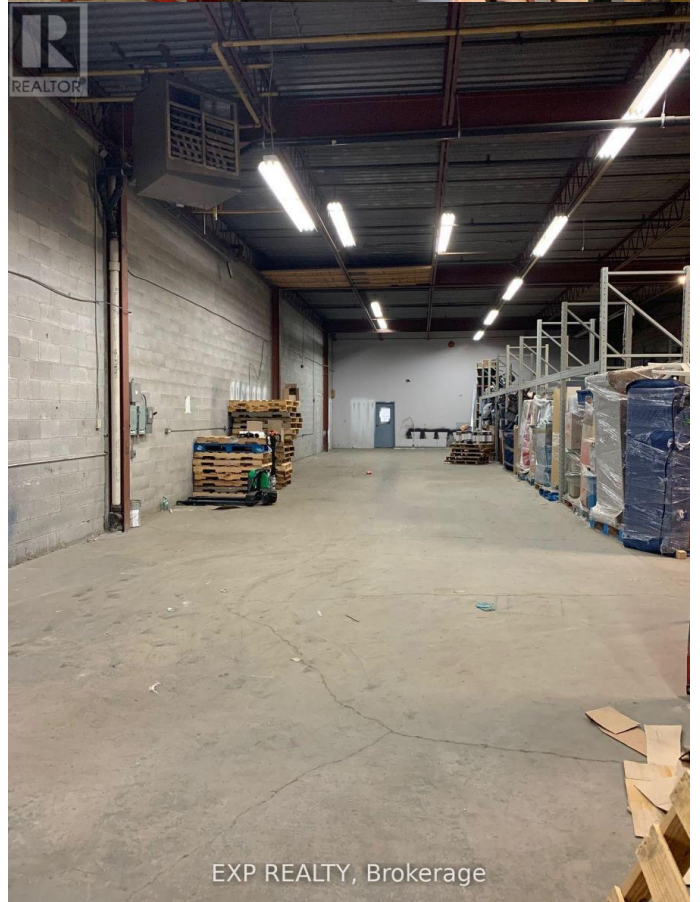
## Amenities

Amenities	Highway, Public Transit
-----------	-------------------------

## Interior

Heating	Electric Forced air
---------	---------------------

## Listing Details



EXP REALTY, Brokerage

Listing Office      EXP REALTY

MLS®, REALTOR®, and the associated logos are trademarks of The Canadian Real Estate Association.