

\$5,999,999 - 3 Edgehill Road, Toronto (edenbridge-Humber Valley)

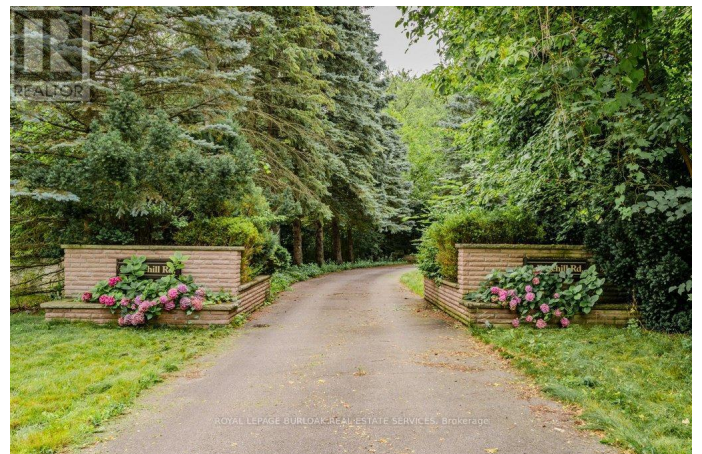
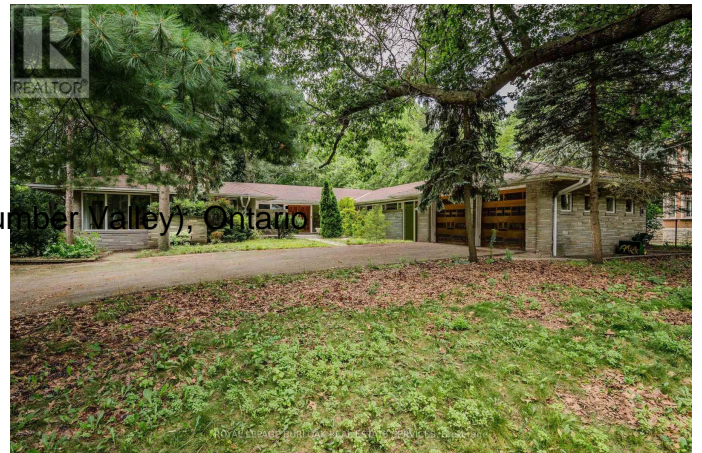
MLS® #W10416148

\$5,999,999

6 Bedroom, 5.00 Bathroom,
Single Family on 0 Acres

Edenbridge-Humber Valley, Toronto (edenbridge-Humber Valley), Ontario

Welcome to 3 Edgehill Road, Etobicoke's most prestigious and desirable street! Let your imagination run wild with one of the last prime pie shaped ravine building lots left. Almost an Acre of land backing to Lambton Woods, Humber river and Lambton Golf & Country club, across the street from St Georges Golf & Country Club and 5 mins from Islington Golf & Country Club, 3 of Canada's most historic and famed golf courses. Build to suit your designs on a 38,500sf (0.88Ac - 100.71F x 248.36R x 303.45L x 170.71B) lot. Alternatively renovate/add a second storey and bring the charm back to this custom, stately expansive bungalow with almost 8000SF of living space. Full walk out basement with 2nd kitchen, indoor pool, full main floor in-law set up with 3rd kitchen, 5+1 bedrooms and 6 bathrooms. Time to realize your dreams and move into one of Toronto's top Neighborhoods, with the best amenities and highest rated schools. Easy access south to Bloor West Village, the lake & Gardiner, West to Hwy427 & Pearson Airport, North to Hwy 401 & Yorkdale and East to all of Downtown Toronto's shops, restaurants and world class entertainment! (id:6289)



Essential Information

Listing #	W10416148
Price	\$5,999,999

Bedrooms	6
Bathrooms	5.00
Half Baths	1
Acres	0.00
Type	Single Family
Sub-Type	House
Style	Bungalow

Community Information

Address	3 Edgehill Road
Subdivision	Edenbridge-Humber Valley
City	Toronto (edenbridge-Humber Valley)
Province	Ontario
Postal Code	M9A4N1

Amenities

Features	Wooded area, Irregular lot size, Ravine, In-Law Suite
Parking Spaces	22
Parking	Attached Garage
# of Garages	1
Has Pool	Yes
Pool	Indoor pool

Interior

Appliances	Dishwasher, Dryer, Oven, Window Coverings, Refrigerator
Heating	Natural gas Forced air
Cooling	Central air conditioning
Has Basement	Yes
Basement	Separate entrance, Walk out
Fireplace	Yes
# of Stories	1

Exterior

Exterior	Stone
Lot Description	100.7 x 284 FT ; 303L/248R /170B 1/2 - 1.99 acres
Foundation	Block

Listing Details

Listing Office	ROYAL LEPAGE BURLOAK REAL ESTATE SERVICES
----------------	---

MLS®, REALTOR®, and the associated logos are trademarks of The Canadian Real Estate Association.