

\$139,500 - S 1/2 Lt 4 Con 2 Lamarche Twp, Cochrane

MLS® #T9280995

\$139,500

0 Bedroom, 0.00 Bathroom,
Vacant Land on 0 Acres

N/A, Cochrane, Ontario

This is your opportunity to experience nature at its best with this 159 acre property, perfect for the outdoor enthusiast. Minutes from the town of Cochrane and situated near the end of a concession road with trail access. The Wicklow river/creek runs thru this property attracting an abundance of wildlife and is located in wildlife management unit 27 for those avid hunters. This property is organized with a general Rural land use designation and includes surface, timber and mineral rights with limited restrictions. Plenty of level and highland to build a camp and enjoy the great outdoors hunting, fishing and 4 seasons of recreational fun. (id:6289)

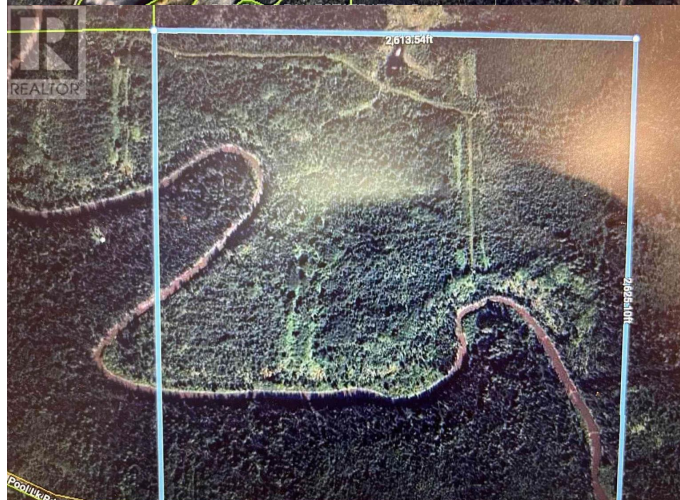
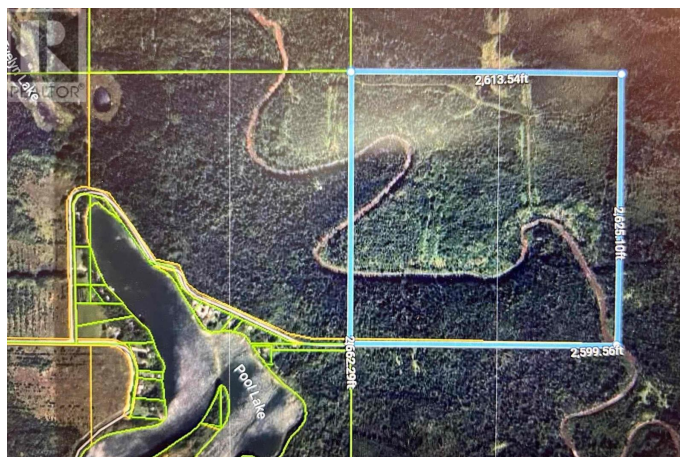
Essential Information

Listing #	T9280995
Price	\$139,500
Bathrooms	0.00
Acres	0.00
Type	Vacant Land

Community Information

Address	S 1/2 Lt 4 Con 2 Lamarche Twp
Subdivision	N/A
City	Cochrane
Province	Ontario
Postal Code	P0L1C0

Amenities



Features Irregular lot size

Is Waterfront Yes

Waterfront Waterfront

Exterior

Lot Description 2599.56 x 2625.1 FT|100+ acres

Listing Details

Listing Office BOREAL REAL ESTATE LTD.

MLS®, REALTOR®, and the associated logos are trademarks of The Canadian Real Estate Association.