

\$ - A - 30 Spence Avenue, Springwater (midhurst)

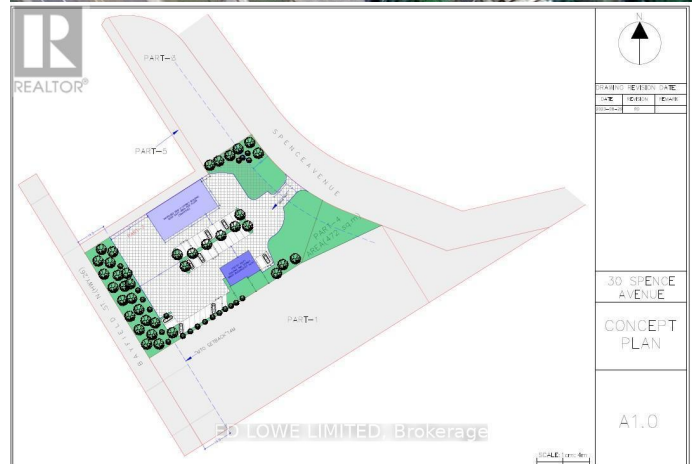
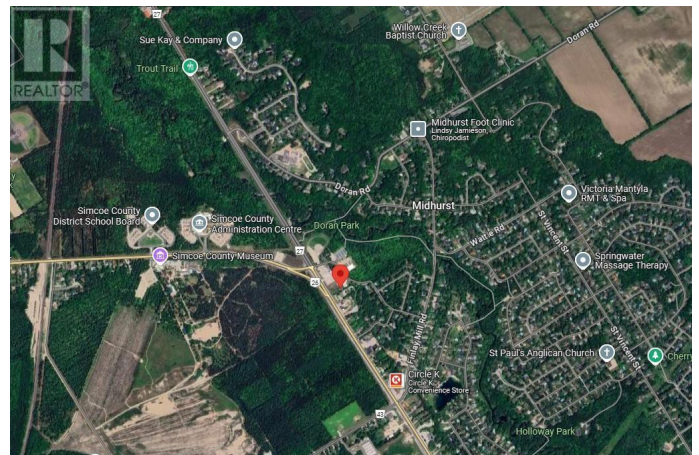
MLS® #S11923995

\$

0 Bedroom, 0.00 Bathroom, 2,000 sqft
Retail on 0 Acres

Midhurst, Springwater (midhurst), Ontario

2000 s.f. inside a brand new 8500 sf building to be built for Lease with great exposure to Bayfield St N (Hwy 26) just outside of Barrie before the split of 26/27 to Collingwood or Elmvale/Midland. General Commercial CG-37 Zoning permitting retail/commercial/office uses. Ideal for Nursery School/daycare with outdoor play area possible, take-out restaurant, fitness studio or medical clinic, professional office, destination retail store or personal service shop and many more. See linked feature sheet for zoning. Can be demised 1000 s.f. - 8500s.f. \$18.00/s.f./yr & est. TMI @ \$8.00/s.f./yr. (id:6289)



Essential Information

Listing #	S11923995
Bathrooms	0.00
Square Footage	2,000
Acres	0.00
Type	Retail

Community Information

Address	A - 30 Spence Avenue
Subdivision	Midhurst
City	Springwater (midhurst)
Province	Ontario
Postal Code	L0L1X1

Interior

Heating Natural gas Forced air
Cooling Fully air conditioned

Exterior

Lot Description 192 x 387 FT

Listing Details

Listing Office ED LOWE LIMITED

MLS®, REALTOR®, and the associated logos are trademarks of The Canadian Real Estate Association.