

\$110,000 - SI62 4573 Chateau Boulevard, Whistler

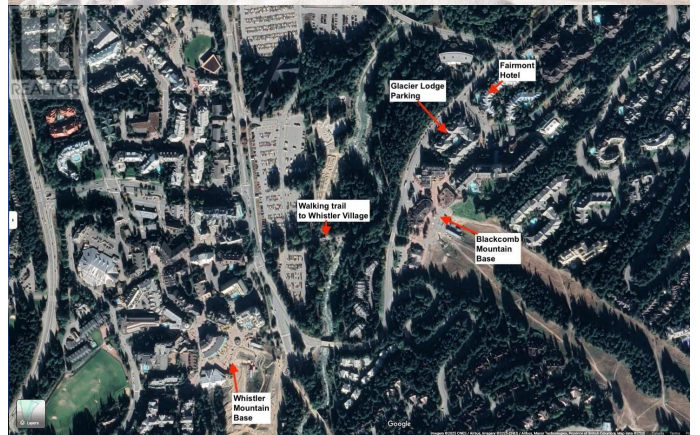
MLS® #R2960074

\$110,000

0 Bedroom, 0.00 Bathroom,
Single Family

N/A, Whistler, British Columbia

Park slopeside to Blackcomb Mountain in Glacier Lodge. A secure, heated underground parking space accessible year-round for summer and winter enjoyment! Exit via the steps out onto the Fairmont Chateau Whistler pedestrian stroll just steps from the Excalibur Gondola. (or via elevator!). Drop off your skis, change your boots and head to the Mallard Lounge for Apres. Park during the summer and pop up for the Farmers Market. Low annual fees. 99 year lease. Currently rented for \$250 pm on a month-to-month basis. Call for more details. (id:6289)



Built in 1988

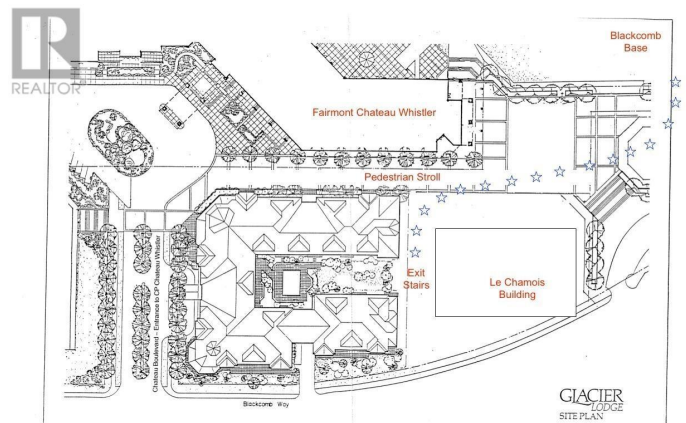
Essential Information

Listing #	R2960074
Price	\$110,000
Bathrooms	0.00
Year Built	1988
Type	Single Family

Community Information

Address	SI62 4573 Chateau Boulevard
Subdivision	N/A
City	Whistler
Province	British Columbia
Postal Code	V8E0Z5

Amenities



Amenities	Golf Course, Recreation, Shopping, Ski hill
Features	Central location, Elevator
Parking Spaces	1
Parking	Underground

Listing Details

Listing Office RE/MAX Sea to Sky Real Estate

MLS®, REALTOR®, and the associated logos are trademarks of The Canadian Real Estate Association.