

\$480,000 - 905 680 Clarkson Street, New Westminister

MLS® #R2949424

\$480,000

1 Bedroom, 1.00 Bathroom, 445 sqft
Single Family

N/A, New Westminister, British Columbia

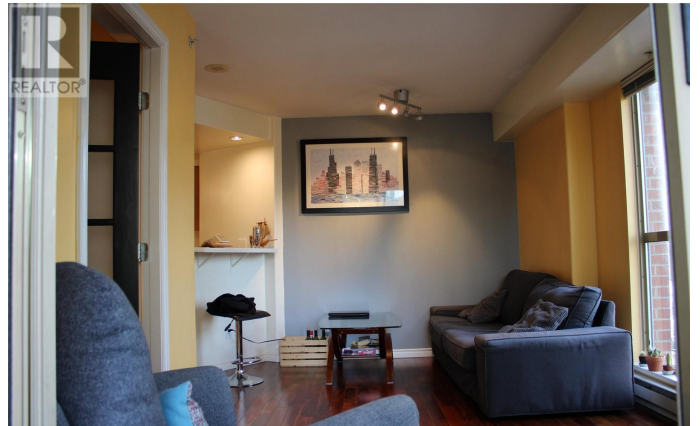
This comfortable corner unit offers essential you need for living. It features a bright living room, a cozy bedroom, a kitchen, a full bathroom, and in-suite laundry. The building boasts excellent amenities, including a gym and a secure parking lot downstairs. Hosting guests? Head to the rooftop patio for a perfect gathering spot with stunning views. The building is well maintained, with a new roof installed just a few years ago for added peace of mind. Nestled in downtown New Westminister, only just 5 minutes walk from SkyTrain stations, making your commute a breeze. With a bridal shop located downstairs, the building carries a unique touch of romance and charm. OPEN HOUSE: SUNDAY MARCH 16TH, 2-4PM (id:6289)

Built in 1998

Essential Information

Listing #	R2949424
Price	\$480,000
Bedrooms	1
Bathrooms	1.00
Square Footage	445
Year Built	1998
Type	Single Family
Sub-Type	Apartment

Community Information



Address	905 680 Clarkson Street
Subdivision	N/A
City	New Westminster
Province	British Columbia
Postal Code	V3M6X9

Amenities

Amenities	Exercise Centre, Laundry - In Suite
Features	Elevator
Parking	Underground, Visitor Parking
View	View

Interior

Heating	Electric
---------	----------

Listing Details

Listing Office	Royal Pacific Tri-Cities Realty
----------------	---------------------------------

MLS®, REALTOR®, and the associated logos are trademarks of The Canadian Real Estate Association.