

\$2,200 - Coach - 7 Sam Priestley Avenue, Markham (cornell)

MLS® #N11909134

\$2,200

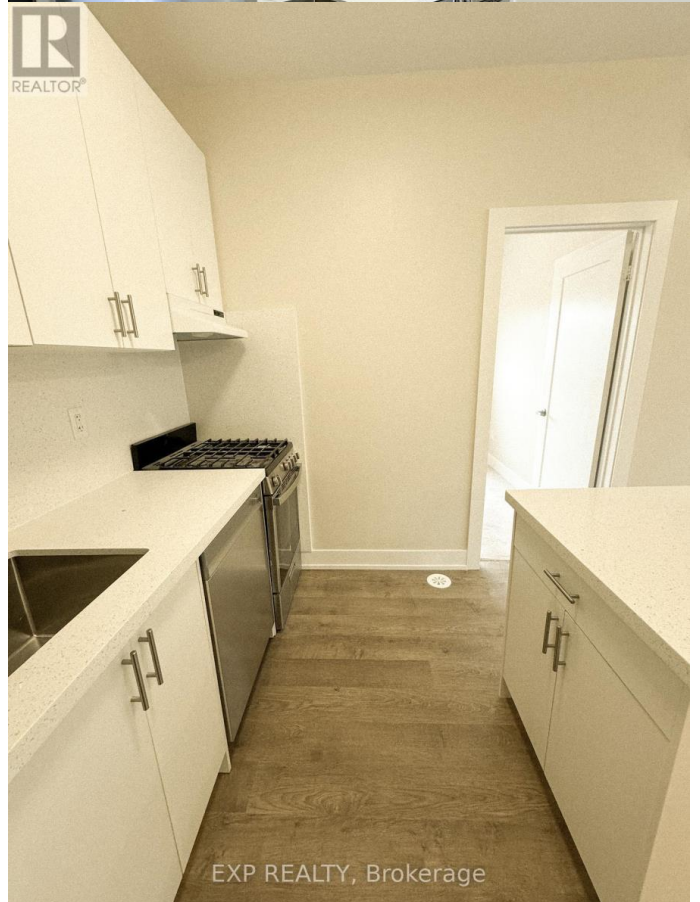
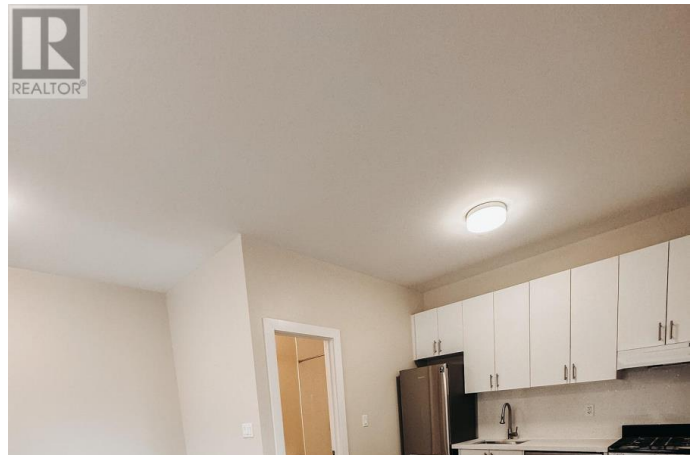
2 Bedroom, 1.00 Bathroom,
Multi-family

Cornell, Markham (cornell), Ontario

Welcome to your cozy new retreat in the heart of Cornell, Markham! This charming 2-bedroom, 1-bathroom coach house is perfect for anyone seeking a blend of comfort and convenience. With its freshly painted interior and quartz countertop, this home exudes modern elegance and a move-in-ready feel. Located in the vibrant Cornell community, you'll enjoy access to local amenities like the Cornell Community Centre, where you can connect with neighbors and partake in recreational activities. Commuters will love the seamless public transit options and the easy access to highways, making your daily travels stress-free. Tenants are responsible for 30% of utilities and internet, ensuring a straightforward and manageable rental arrangement. Don't miss this opportunity to live in a home that perfectly balances charm and practicality in one of Markham's most sought-after neighborhoods. Schedule a viewing today and experience what makes this property so special! ****EXTRAS**** Stainless steel appliances (Dishwasher, Fridge, Gas Stove), washer, and dryer (id:6289)

Essential Information

Listing #	N11909134
Price	\$2,200
Bedrooms	2
Bathrooms	1.00



EXP REALTY, Brokerage

Type	Multi-family
Sub-Type	Duplex

Community Information

Address	Coach - 7 Sam Priestley Avenue
Subdivision	Cornell
City	Markham (cornell)
Province	Ontario
Postal Code	L6B1P1

Amenities

Amenities	Hospital, Park, Public Transit, Schools
Utilities	Sewer
Parking Spaces	1

Interior

Appliances	Water softener
Heating	Natural gas Forced air
Cooling	Central air conditioning

Exterior

Exterior	Brick
Foundation	Brick

Listing Details

Listing Office	EXP REALTY
----------------	------------

MLS®, REALTOR®, and the associated logos are trademarks of The Canadian Real Estate Association.