

\$ - 2038 Nash Road, Clarington

MLS® #E9229676

\$

0 Bedroom, 0.00 Bathroom, 11,400 sqft
Retail on 0 Acres

Rural Clarington, Clarington, Ontario

School East Of The City Of Oshawa, N. Of Hwy 2/E Of Hwy 418 On Nash Rd., Single Story School Approx. 11,400 Sf, Incl.6,000 Sf Of 4 Classrooms & 5,600 Sf Of Gym , W/Boys & Girls Change Rooms, Offices, Reception, Storage, Bathrooms, Kitchenette & Utility Rm. Storage Shed, Playground, 46 Car Park On Approximate 2.85 Acres. Gym Height 24 Ft W/In Floor Radiant Heating. ****EXTRAS**** Addition Rent (T.M.I) \$3.25/SF per year per 2023 , May Adjust. The Tenant Pay Utilities . (id:6289)



Essential Information

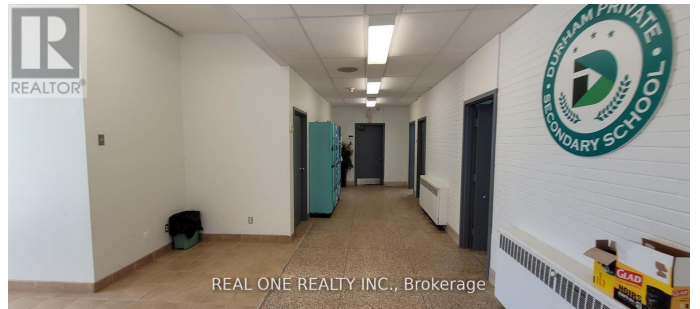
Listing #	E9229676
Bathrooms	0.00
Square Footage	11,400
Acres	0.00
Type	Retail

Community Information

Address	2038 Nash Road
Subdivision	Rural Clarington
City	Clarington
Province	Ontario
Postal Code	L1C3K4

Amenities

Features	Conservation/green belt
Parking Spaces	46



Interior

Heating Hot water radiator heat

Exterior

Lot Description 356 x 348 FT

Listing Details

Listing Office REAL ONE REALTY INC.

MLS®, REALTOR®, and the associated logos are trademarks of The Canadian Real Estate Association.