

# \$459,900 - 45 Gambel Lo, Spruce Grove

MLS® #E4423905

## \$459,900

3 Bedroom, 3.00 Bathroom, 1,606 sqft  
Single Family

Greenbury, Spruce Grove, Alberta

This beautiful home is located in a vibrant community of Spruce Grove's Civic Centre with quick access to Highway 16. It features a spacious open-concept main floor with a designer kitchen, quartz countertops, a 50 electric fireplace and a kitchen appliance package. Upstairs, you will find a large primary bedroom with walk-in closet and 4-piece ensuite, two additional bedrooms, a bonus room and laundry. The home also includes a basement with two windows, metal spindle railing, upgraded pantry door, luxury vinyl plank flooring and a Smart Home System for added convenience. (id:6289)

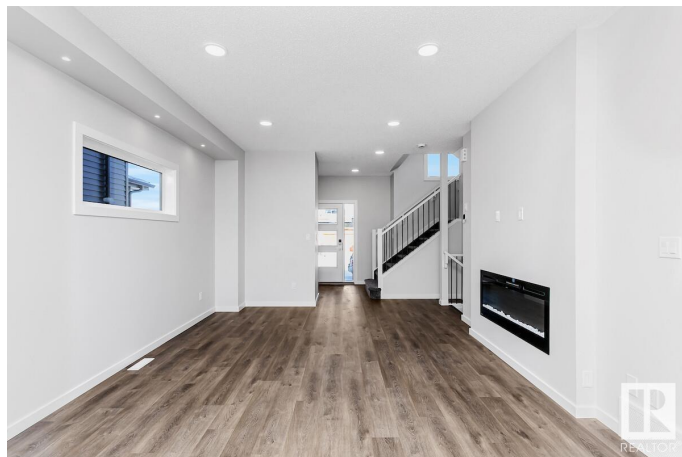
Built in 2025

## Essential Information

Listing #	E4423905
Price	\$459,900
Bedrooms	3
Bathrooms	3.00
Half Baths	1
Square Footage	1,606
Year Built	2025
Type	Single Family
Sub-Type	House

## Community Information

Address	45 Gambel Lo
Subdivision	Greenbury



City	Spruce Grove
Province	Alberta
Postal Code	T7X0C9

### **Amenities**

Amenities	Playground, Schools, Shopping, Ceiling - 9ft
Features	Park/reserve, Lane, No Animal Home, No Smoking Home
Parking Spaces	2
Parking	Parking Pad

### **Interior**

Appliances	Dishwasher, Microwave Range Hood Combo, Refrigerator, Stove
Heating	Forced air
Fireplace	Yes
Fireplaces	Electric
# of Stories	2

### **Listing Details**

Listing Office	Bode
----------------	------

MLS®, REALTOR®, and the associated logos are trademarks of The Canadian Real Estate Association.