

\$479,980 - 9155 155 St Nw, Edmonton

MLS® #E4422876

\$479,980

3 Bedroom, 2.00 Bathroom, 724 sqft
Single Family on 0 Acres

Jasper Park, Edmonton, Alberta

Attention Developers! This sought after 55 x 131' CORNER LOT offers over 625 sq/m, ideal for a wide range of redevelopment possibilities. This property is perfect for your next 8 plex multi-unit / infill or custom project and is located in the Great neighborhood of Jasper Park. Close to Schools, playgrounds, WEM, Whitemud Drive and Downtown, with the Future West Valley LRT line near-by. This rare property won't last long! (id:6289)

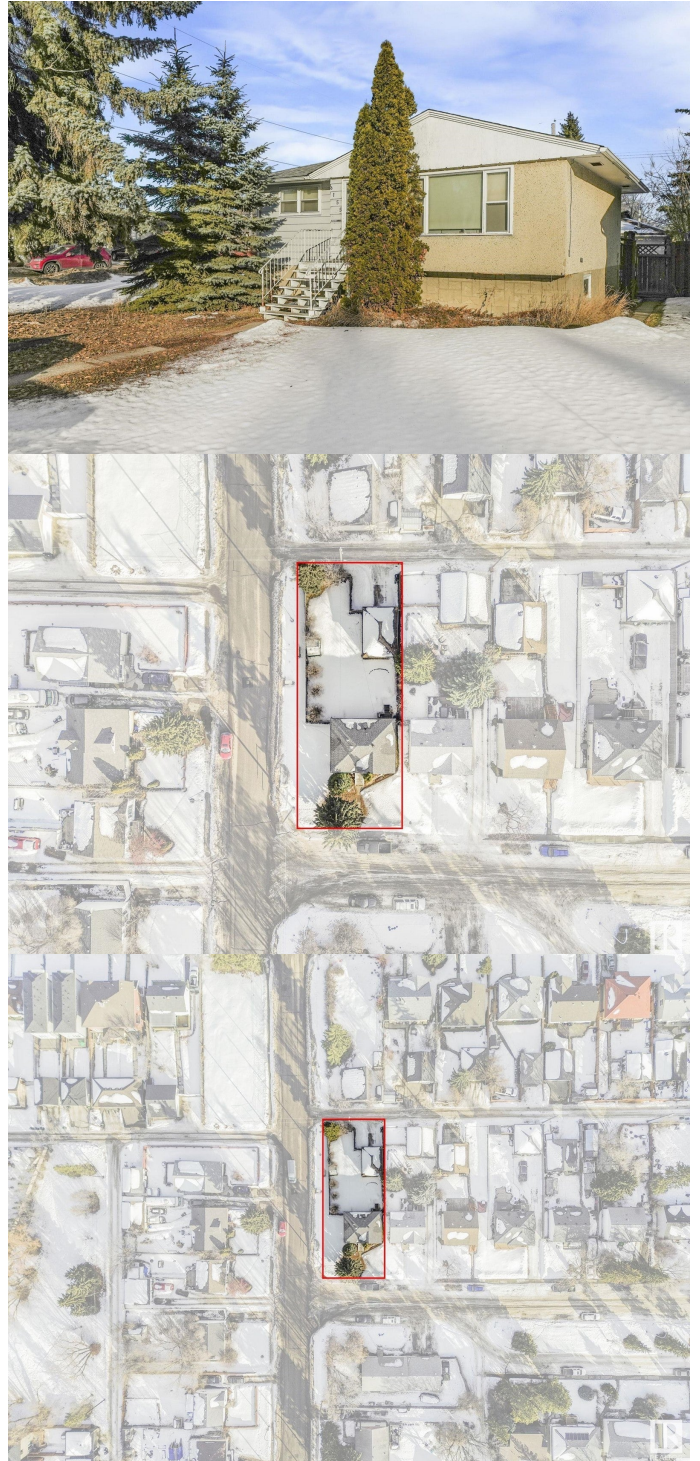
Built in 1957

Essential Information

| | |
|----------------|-----------------|
| Listing # | E4422876 |
| Price | \$479,980 |
| Bedrooms | 3 |
| Bathrooms | 2.00 |
| Half Baths | 1 |
| Square Footage | 724 |
| Acres | 0.15 |
| Year Built | 1957 |
| Type | Single Family |
| Sub-Type | House |
| Style | Raised bungalow |

Community Information

| | |
|-------------|----------------|
| Address | 9155 155 St Nw |
| Subdivision | Jasper Park |
| City | Edmonton |



Province Alberta
Postal Code T5R1W6

Amenities

Amenities Schools, Shopping
Features Corner Site
Parking Detached Garage
of Garages 1

Interior

Appliances Dryer, Garage door opener remote(s), Hood Fan, Refrigerator, Stove,
Washer, Window Coverings
Heating Forced air
Has Basement Yes
of Stories 1

Listing Details

Listing Office Initia Real Estate

MLS®, REALTOR®, and the associated logos are trademarks of The Canadian Real Estate Association.