

# \$465,500 - 236 Rolston Wd, Leduc

MLS® #E4412265

## \$465,500

4 Bedroom, 3.00 Bathroom, 1,636 sqft  
Single Family

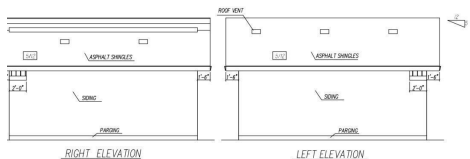
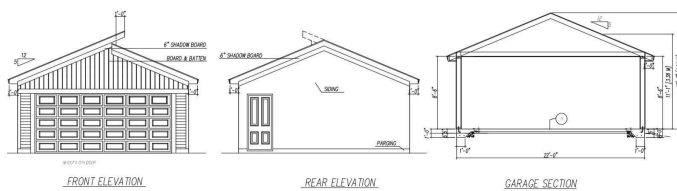
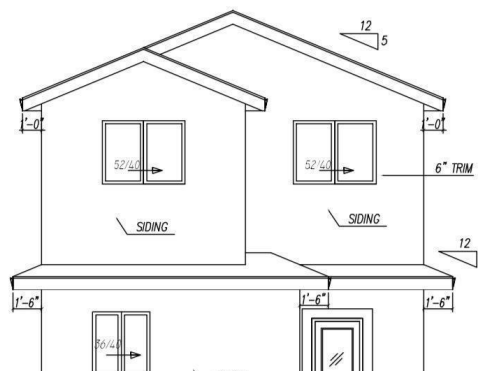
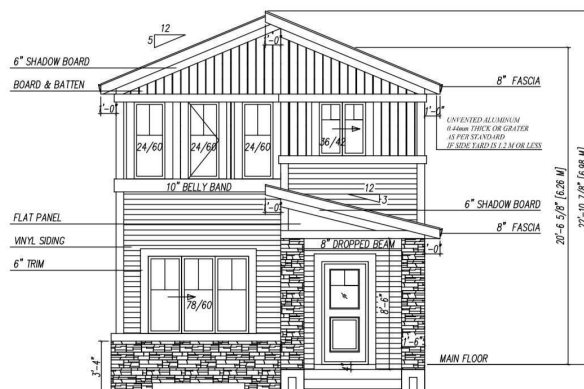
Robinson, Leduc, Alberta

Welcome to Your dream Home in Robinson, Leduc ,Located just 5 minutes from the international airport and the new airport shopping mall, this stunning new construction offers exceptional value and luxury. This beautiful home features a versatile main floor bedroom and full bathroom, perfect for multi-generational living or a home office. The open layout includes a spacious great room and chef's kitchen, ideal for entertaining. Upstairs, you'll find a large family room, two generous bedrooms, two full bathrooms, and a convenient laundry area plus bonus room perfect for growing families. The unfinished basement with a separate entry offers potential for personalization, making this home a great choice for first time homebuyers ,large families and investors. Great opportunity for job to be customize. (id:6289)

Built in 2024

## Essential Information

Listing #	E4412265
Price	\$465,500
Bedrooms	4
Bathrooms	3.00
Square Footage	1,636
Year Built	2024
Type	Single Family
Sub-Type	House



## **Community Information**

Address	236 Rolston Wd
Subdivision	Robinson
City	Leduc
Province	Alberta
Postal Code	T9E1N1

## **Amenities**

Amenities	Airport, Playground, Shopping
Features	No Animal Home, No Smoking Home
Parking	Parking Pad

## **Interior**

Heating	Forced air
Fireplace	Yes
Fireplaces	Electric
# of Stories	2

## **Listing Details**

Listing Office	Initia Real Estate
----------------	--------------------

MLS®, REALTOR®, and the associated logos are trademarks of The Canadian Real Estate Association.