

# \$2,400 - 123 Mary Street E, Whitby (downtown Whitby)

MLS® #E11994108

**\$2,400**

0 Bedroom, 0.00 Bathroom, 1,365 sqft

Retail on 0 Acres

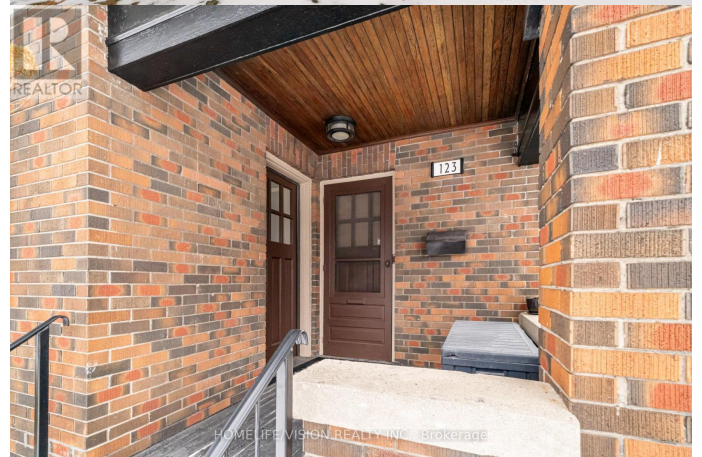
Downtown Whitby, Whitby (downtown Whitby), Ontario

Discover this charming and character-filled, free-standing building in the heart of downtown Whitby, offering 6 offices with plenty of natural light. This versatile property is ideally suited for a variety of uses, including medical, dental, accounting, real estate, and more.

Easy access to major roads, transit, and local amenities. The property also features convenient on-site parking for staff and clients, as well as municipal metered parking.

Looking for Whitby's most sought-after areas, this exceptional property is an ideal choice.

(id:6289)



## Essential Information

Listing #	E11994108
Price	\$2,400
Bathrooms	0.00
Square Footage	1,365
Acres	0.00
Type	Retail

## Community Information

Address	123 Mary Street E
Subdivision	Downtown Whitby
City	Whitby (downtown Whitby)
Province	Ontario
Postal Code	L1N2P3

## Interior



Heating Natural gas Forced air  
Cooling Fully air conditioned

### **Exterior**

Lot Description 57.3 x 115 FT

### **Listing Details**

Listing Office HOMELIFE/VISION REALTY INC.

MLS®, REALTOR®, and the associated logos are trademarks of The Canadian Real Estate Association.