

# \$ - 2221 4500 Kingsway, Burnaby

MLS® #C8066664

\$

0 Bedroom, 0.00 Bathroom,  
Retail

N/A, Burnaby, British Columbia

This is the perfect location to launch your business. Situated on the second floor of Crystal Mall in Central Burnaby, directly across from the elevator, this commercial space offers exceptional visibility. The unit includes 9 drainage outlets, making it well-suited for a wide range of businesses, including beauty services, acupuncture, massage, medical practices, RMT, dentistry, law firms, or offices, among others. Crystal Mall is a popular hub for the Chinese community, conveniently located near Metrotown, the SkyTrain, and nearby residential complexes. Don't miss this fantastic opportunity to start your business. Contact us today! (id:6289)

Built in 1998

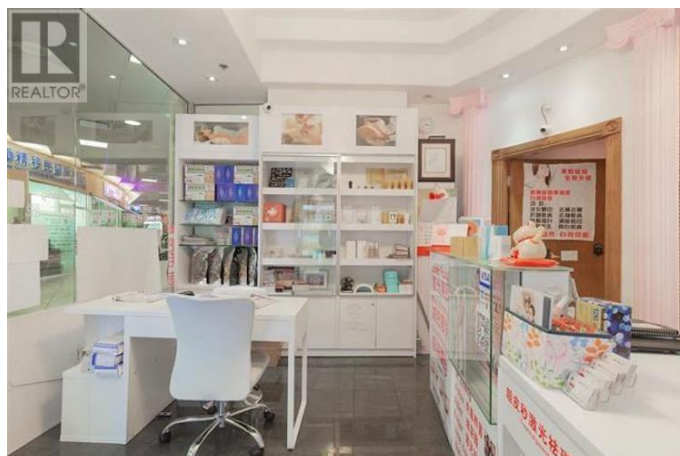
## Essential Information

Listing #	C8066664
Bathrooms	0.00
Year Built	1998
Type	Retail

## Community Information

Address	2221 4500 Kingsway
Subdivision	N/A
City	Burnaby
Province	British Columbia
Postal Code	V5H2A9

## Listing Details



Listing Office          Nu Stream Realty Inc.

MLS®, REALTOR®, and the associated logos are trademarks of The Canadian Real Estate Association.