

\$ - 31290 Wheel Avenue, Abbotsford

MLS® #C8061369

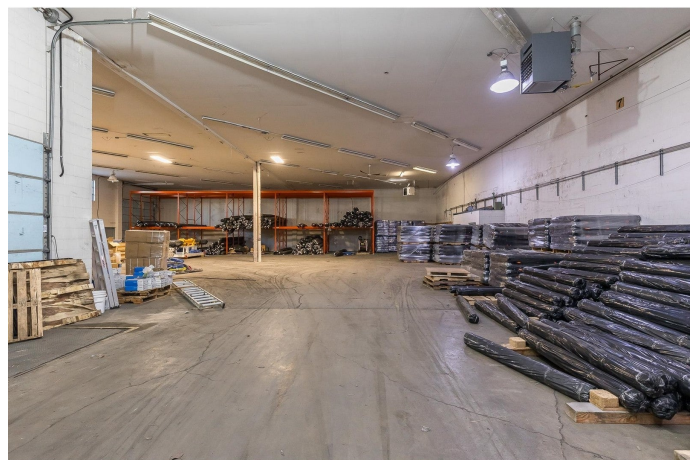
\$

0 Bedroom, 0.00 Bathroom,
Industrial

N/A, Abbotsford, British Columbia

Located in Abbotsford's main industrial area, only minutes to Highway 1 via Mt. Lehman Road, 8,000 SF of this freestanding industrial building is available for storage as a sublease.

At the rear of the building off of Carpenter Street, there is a separate entrance where 2 dock loading doors are available for your businesses use plus 1 grade loading door. This 8,000 SF is fully open with racking available to use on the far south side of the building. With plenty of parking available on the street and potentially on site, plus a fully fenced yard! Sublease expires March 29, 2027. Size: 8,000 SF Base Rent: \$17.00/SF Additional Rent \$5.00/SF (id:6289)



Essential Information

Listing # C8061369
Bathrooms 0.00
Type Industrial

Community Information

Address 31290 Wheel Avenue
Subdivision N/A
City Abbotsford
Province British Columbia
Postal Code V2T6H1

Listing Details

Listing Office RE/MAX Commercial Advantage

MLS®, REALTOR®, and the associated logos are trademarks of The Canadian Real Estate Association.