

# \$ - 388 Parliament Street, Toronto (moss Park)

MLS® #C12013843

\$

0 Bedroom, 0.00 Bathroom, 4,000 sqft  
Office on 0 Acres

Moss Park, Toronto (moss Park), Ontario

A remarkable office space for lease in the revitalized Moss Park which sits directly across from Daniels on Parliament - a new 10 storey condo development. This office space has 3 floors comprising of approximately 4000 square feet with 6 designated parking spots in the rear including a loading dock with roll up doors. The main floor offers plenty of character and layout options with divided rooms, elevations, kitchenettes and more. The second floor offers a boutique and contemporary layout with large windows and floor to ceiling glass partitions. This building was formerly leased to a printing company which successfully tenanted this property for many years. Many uses are available and welcomed with the CR2 zoning. A virtual tour is available to get a better idea of the possibilities.

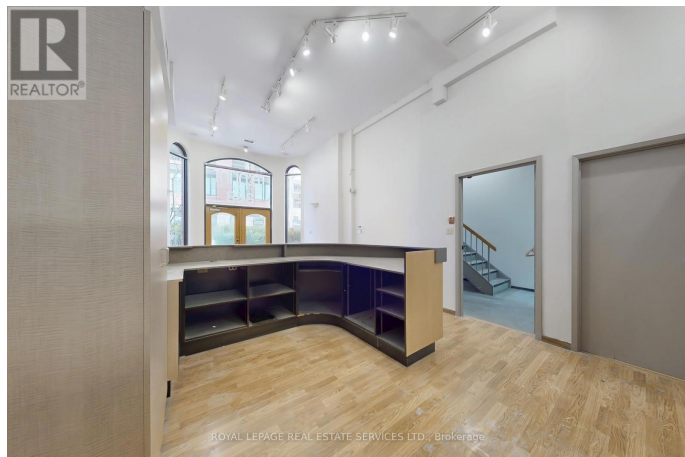
(id:6289)

## Essential Information

Listing #	C12013843
Bathrooms	0.00
Square Footage	4,000
Acres	0.00
Type	Office
Sub-Type	Offices

## Community Information

Address	388 Parliament Street
Subdivision	Moss Park



City	Toronto (moss Park)
Province	Ontario
Postal Code	M5A2Z7

### **Amenities**

Parking Spaces	6
----------------	---

### **Interior**

Heating	Natural gas Forced air
Cooling	Fully air conditioned

### **Exterior**

Lot Description	32.44 x 142.3 FT
-----------------	------------------

### **Listing Details**

Listing Office	ROYAL LEPAGE REAL ESTATE SERVICES LTD.
----------------	--

MLS®, REALTOR®, and the associated logos are trademarks of The Canadian Real Estate Association.