

\$2,150 - 624 - 28 Eastern Avenue, Toronto (moss Park)

MLS® #C12012542

\$2,150

2 Bedroom, 1.00 Bathroom,
Single Family

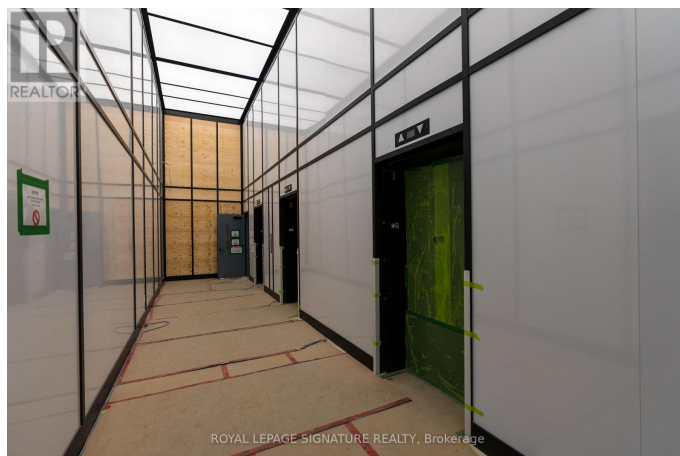
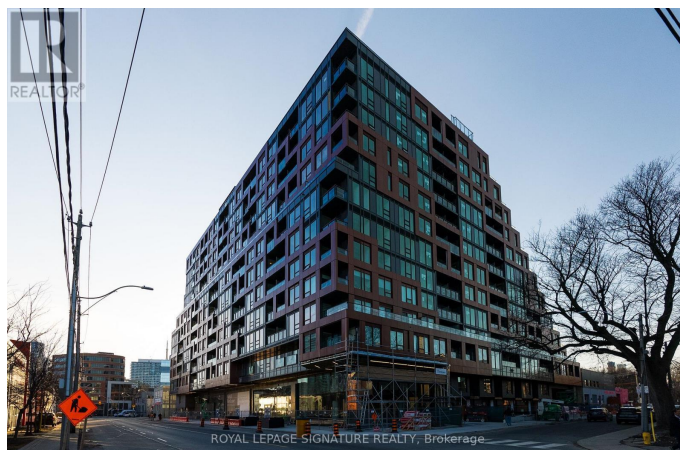
Moss Park, Toronto (moss Park), Ontario

Modern. Stylish. Elevated. Welcome to 28 Eastern Avenue, the newest hotspot in Corktown! This never-lived-in 1-bedroom + den unit blends sleek modern design with urban character. High Ceilings, large west-facing windows flood the space with natural light. The contemporary kitchen boasts quartz countertops, built-in appliances, a built-in fridge, and a built-in dishwasher. Step onto your private balcony for a breath of fresh air, and enjoy the convenience of ensuite laundry and extra storage with a locker. Perfectly located at Cherry St. & Eastern Ave, you're minutes from trendy cafes, the Distillery District, parks, and transit for effortless city access. Future amenities, including a rooftop terrace and co-working spaces, will enhance the already exceptional lifestyle this building offers. Don't miss your chance to live in one of Toronto's most vibrant neighborhoods!
(id:6289)

Essential Information

Listing #	C12012542
Price	\$2,150
Bedrooms	2
Bathrooms	1.00
Type	Single Family
Sub-Type	Apartment

Community Information



Address	624 - 28 Eastern Avenue
Subdivision	Moss Park
City	Toronto (moss Park)
Province	Ontario
Postal Code	M5A0Y2

Amenities

Amenities	Hospital, Park, Place of Worship, Security/Concierge, Recreation Centre, Exercise Centre, Party Room, Visitor Parking, Storage - Locker
Features	Balcony, Carpet Free
Parking	No Garage
View	View, City view

Interior

Appliances	Oven - Built-In
Heating	Natural gas Forced air
Cooling	Central air conditioning

Exterior

Exterior	Aluminum siding, Brick
----------	------------------------

Listing Details

Listing Office	ROYAL LEPAGE SIGNATURE REALTY
----------------	-------------------------------

MLS®, REALTOR®, and the associated logos are trademarks of The Canadian Real Estate Association.