

# \$ - 290 Shuter Street, Toronto (moss Park)

MLS® #C11998556

\$

0 Bedroom, 0.00 Bathroom, 7,471 sqft  
Office on 0 Acres

Moss Park, Toronto (moss Park), Ontario

Medical/office space in a character-filled converted loft at 290 Shuter St.

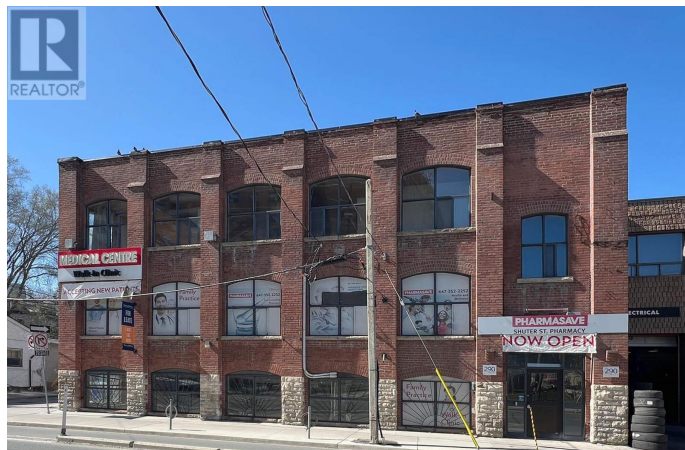
Brick-and-beam construction with high ceilings and large factory-style windows for great natural light. Three floors available, each with elevator access and full accessibility. Sizes: 1st (2,418 SF), 2nd (2,499 SF), 3rd (2,554 SF) with a full kitchen. Lease one floor or the entire building. Tenant responsible for utilities and TMI. Located in a growing downtown area, steps from the Queen East 501 streetcar and a short walk to Yonge & Queen. Public parking nearby and easy access to the DVP or Gardiner Highways. Many potential uses, office, showroom, fitness, beauty/health/wellness clinic, prep kitchen, daycare. (id:6289)

## Essential Information

Listing #	C11998556
Bathrooms	0.00
Square Footage	7,471
Acres	0.00
Type	Office
Sub-Type	Offices

## Community Information

Address	290 Shuter Street
Subdivision	Moss Park
City	Toronto (moss Park)



RE/MAX PROFESSIONALS INC., Brokerage



RE/MAX PROFESSIONALS INC., Brokerage

Province Ontario  
Postal Code M5A1W7

### **Amenities**

Amenities Highway, Public Transit  
Features Elevator

### **Interior**

Heating Natural gas Forced air  
Cooling Fully air conditioned

### **Exterior**

Lot Description 61 x 50 FT

### **Listing Details**

Listing Office RE/MAX PROFESSIONALS INC.

MLS®, REALTOR®, and the associated logos are trademarks of The Canadian Real Estate Association.