

\$2,400 - 931 Se - 60 Princess Street, Toronto (waterfront Co

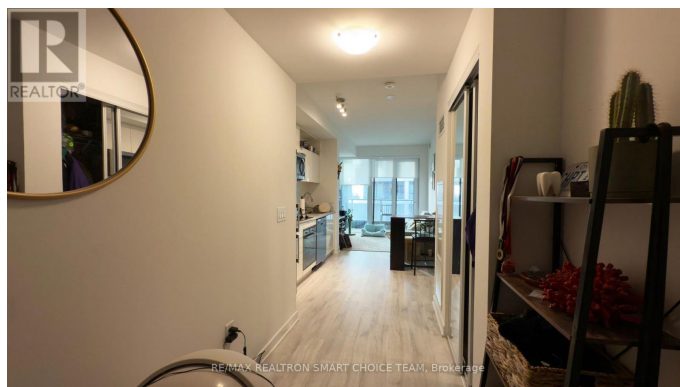
MLS® #C11991758

\$2,400

1 Bedroom, 1.00 Bathroom,
Single Family

Waterfront Communities C8, Toronto (waterfront Communities), Ontario

Welcome to Time & Space by Pemberton!
Located in a prime spot at Front St E & Sherbourne, just steps from the Distillery District, TTC, St. Lawrence Market, and the Waterfront! This sleek building offers an impressive array of amenities, including an infinity-edge pool, rooftop cabanas, outdoor BBQ area, games room, gym, yoga studio, party room, and more. This functional 1-bedroom, 1-bathroom unit boasts 9' high smooth ceilings, 7 1/2" wide premium laminate flooring, and a 27" stacked washer/dryer. Enjoy modern S/S appliances and internet included. Plus, a balcony with a west-facing exposure! Experience elevated urban living at its best! (id:6289)



Essential Information

Listing #	C11991758
Price	\$2,400
Bedrooms	1
Bathrooms	1.00
Type	Single Family
Sub-Type	Apartment

Community Information

Address	931 Se - 60 Princess Street
Subdivision	Waterfront Communities C8
City	Toronto (waterfront Communities)
Province	Ontario

Postal Code M5A2C7

Amenities

Amenities Hospital, Park, Place of Worship, Public Transit, Schools, Security/Concierge, Recreation Centre, Exercise Centre, Party Room

Features Balcony

Parking Spaces 1

Parking Garage, Underground

of Garages 1

Interior

Heating Natural gas Forced air

Cooling Central air conditioning

Exterior

Exterior Concrete

Listing Details

Listing Office RE/MAX REALTRON SMART CHOICE TEAM

MLS®, REALTOR®, and the associated logos are trademarks of The Canadian Real Estate Association.