

# \$ - 201 & 301 - 50 St Clair Avenue E, Toronto (rosedale-Moo

MLS® #C11977330

\$

0 Bedroom, 0.00 Bathroom, 5,004 sqft  
Office

Rosedale-Moore Park, Toronto (rosedale-Moore Park), Ontario

50 St. Clair Avenue E is a prominent commercial building located in the vibrant neighborhood of Yonge and St. Clair. This move in ready space offers full 2ND floor AND 3RD Floor (2502 SQ feet each , Total5004 SQ feet Plus Additional basement available for storage too),, Already built offices, conference room , reception area, cabins and washrooms, direct elevator access in a prime location for businesses. A variety of different uses and lease terms, with some of the lowest gross rents in Midtown Toronto.1 Parking Spot Available. (id:6289)

## Essential Information

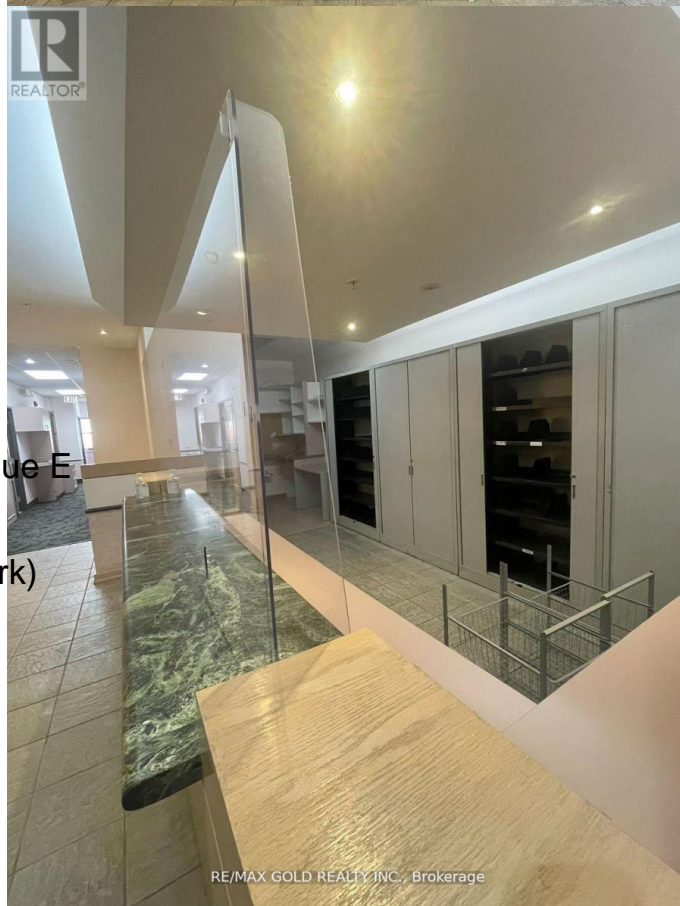
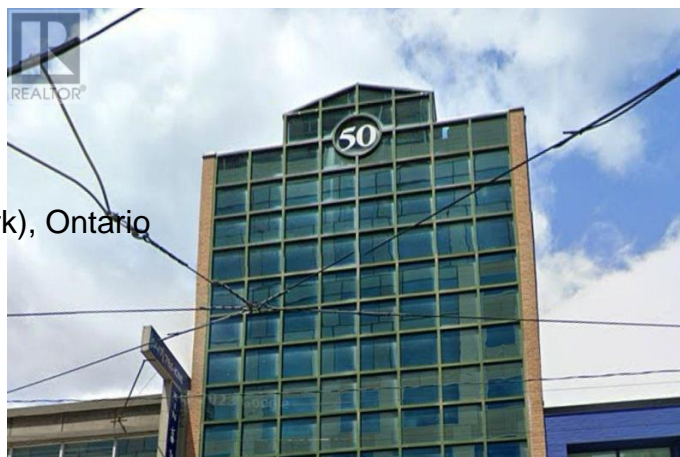
Listing #	C11977330
Bathrooms	0.00
Square Footage	5,004
Type	Office
Sub-Type	Offices

## Community Information

Address	201 & 301 - 50 St Clair Avenue E
Subdivision	Rosedale-Moore Park
City	Toronto (rosedale-Moore Park)
Province	Ontario
Postal Code	M4T1M9

## Amenities

Features	Elevator
----------	----------



## **Interior**

Heating                    Natural gas Other  
Cooling                    Fully air conditioned

## **Listing Details**

Listing Office            RE/MAX GOLD REALTY INC.

MLS®, REALTOR®, and the associated logos are trademarks of The Canadian Real Estate Association.