

\$ - 350 - 76 Richmond Street E, Toronto (church-Yonge Corridor)

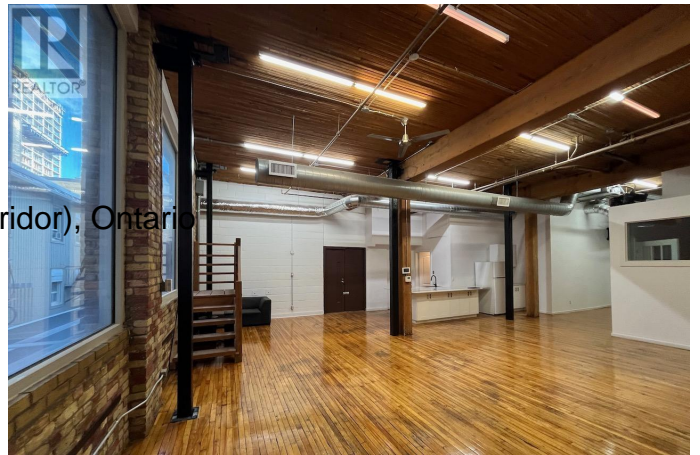
MLS® #C11946754

\$

0 Bedroom, 1.00 Bathroom, 1,520 sqft
Office on 0 Acres

Church-Yonge Corridor, Toronto (church-Yonge Corridor), Ontario

Gorgeous Brick & Beam Character Office One City Block East Of Yonge St And Within A Short 400M Walk Of The Ttc Queen And King Subway Stations. Private Bathroom & Private Kitchenette; With A Variety Of Permitted Commercial Uses, The Property Is Ideal For Medical Practices, Professional Service Firms, Ict, Creative, Etc.; 3,020 square feet when combining suite 330 & 350. ****EXTRAS**** Security Cameras. Sprinklers; Semi-Gross Rent Plus Proportionate Share Of Utilities; 100 Transit Score And 98 Walk Score; Unit 350 Is On The Second Floor (id:6289)



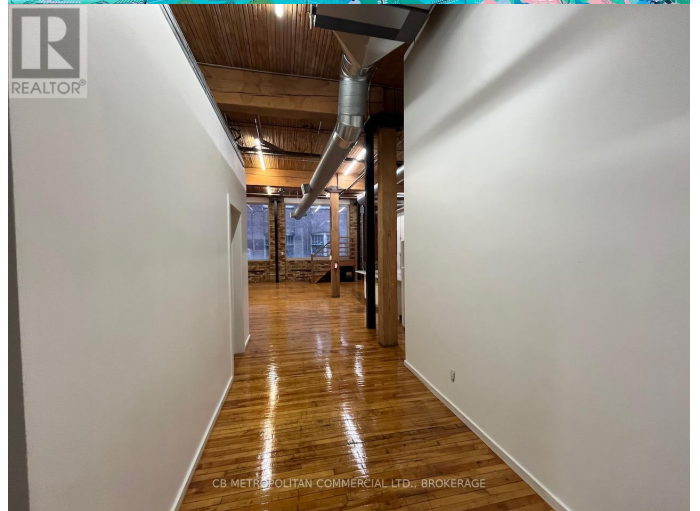
Essential Information

Listing #	C11946754
Bathrooms	1.00
Square Footage	1,520
Acres	0.00
Type	Office
Sub-Type	Offices

Community Information

Address	350 - 76 Richmond Street E
Subdivision	Church-Yonge Corridor
City	Toronto (church-Yonge Corridor)
Province	Ontario
Postal Code	M5C1P1

Amenities



Amenities Public Transit
Features Elevator

Interior

Heating Natural gas Other
Cooling Fully air conditioned

Exterior

Lot Description 40 x 93.42 FT

Listing Details

Listing Office CB METROPOLITAN COMMERCIAL LTD.

MLS®, REALTOR®, and the associated logos are trademarks of The Canadian Real Estate Association.