

\$2,200 - 1508 - 81 Wellesley Street E, Toronto (church-Yonge

MLS® #C11911833

\$2,200

1 Bedroom, 1.00 Bathroom,
Single Family

Church-Yonge Corridor, Toronto (church-Yonge Corridor), Ontario

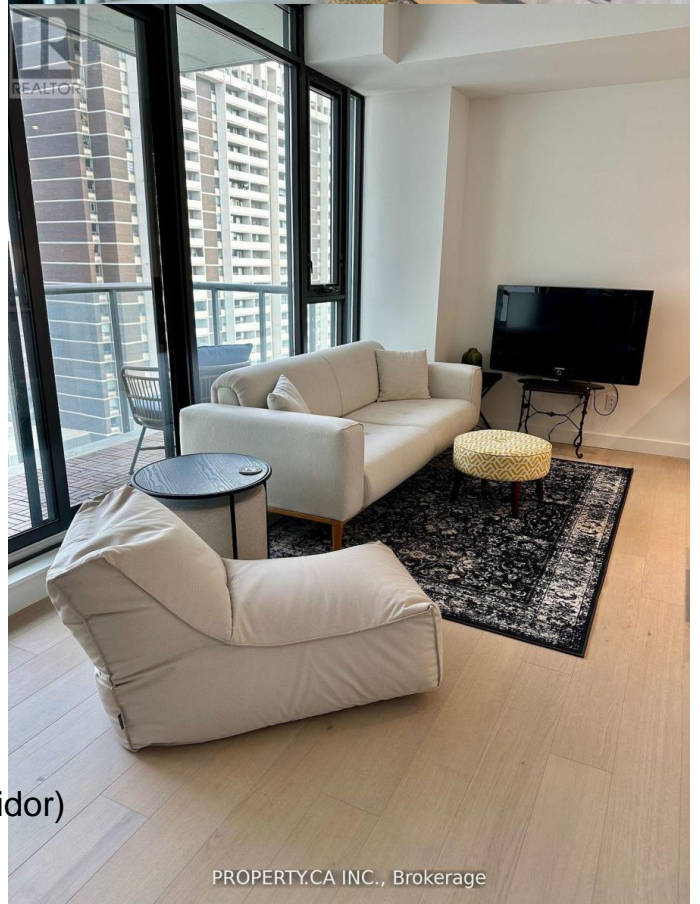
New luxury 1B condo with a NE pvt exposure(510 + 81 sqft)with contemporary features. Open concept living, modern kitchen with Built-in high-end appliances, Oven, Cooktop, integrated Fridge and Dishwasher, a Front-load Washer and Dryer, pullout pantry, floor-to-ceiling windows with an abundance of light, fully tiled shower bathroom, and a generous balcony includes a built-in gas-line with wooden floor tiles. All ELF's. Locker and Bike storage included A walk/bike/transit score: 99/93/93. Steps away from grocery, restaurants, parks, and more. Approx 4-minute walk to the TTC station and shops on Church St. ****EXTRAS**** The property can be leased furnished or unfurnished for \$2300.00 and is a non-smoking unit. (id:6289)

Essential Information

Listing #	C11911833
Price	\$2,200
Bedrooms	1
Bathrooms	1.00
Type	Single Family
Sub-Type	Apartment

Community Information

Address	1508 - 81 Wellesley Street E
Subdivision	Church-Yonge Corridor
City	Toronto (church-Yonge Corridor)



Province Ontario
Postal Code M5V1J6

Amenities

Amenities Storage - Locker
Features Balcony
Parking Underground

Interior

Appliances Cooktop, Dryer, Stove, Washer, Refrigerator
Heating Natural gas Forced air
Cooling Central air conditioning

Exterior

Exterior Concrete

Listing Details

Listing Office PROPERTY.CA INC.

MLS®, REALTOR®, and the associated logos are trademarks of The Canadian Real Estate Association.