

\$2,200 - 3603 - 65 Bremner Boulevard, Toronto (waterfront C

MLS® #C11910922

\$2,200

0 Bedroom, 1.00 Bathroom,
Single Family

Waterfront Communities C1, Toronto (waterfront Communities), Ontario

The Residences of Maple Leaf Square - a beautiful bachelor unit that boasts a CN Tower and Harbourfront view! Located in the desirable entertainment district steps away from Scotiabank Arena, Union Station, the PATH, Toronto Harbourfront, many tourist attractions & activities, and bars & restaurants. The city is at your doorstep! Walking score - 97. Transit score - 100. Option to have unit furnished is negotiable. (id:6289)

Essential Information

Listing #	C11910922
Price	\$2,200
Bathrooms	1.00
Type	Single Family
Sub-Type	Apartment

Community Information

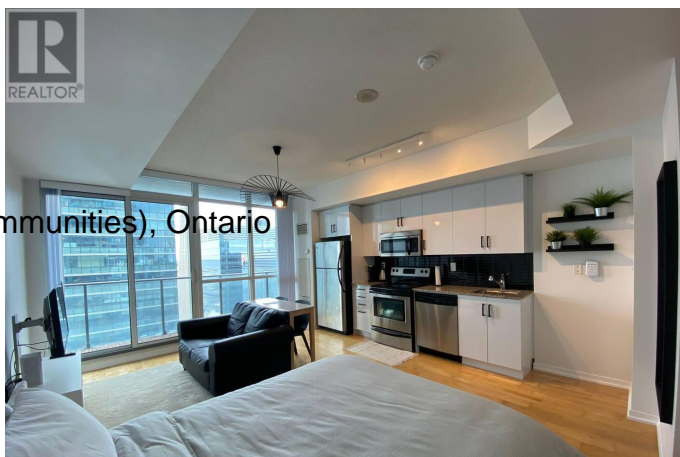
Address	3603 - 65 Bremner Boulevard
Subdivision	Waterfront Communities C1
City	Toronto (waterfront Communities)
Province	Ontario
Postal Code	M5J0A7

Amenities

Features Balcony

Interior

Appliances Dishwasher, Dryer, Microwave, Stove, Washer, Window Coverings,



	Refrigerator
Heating	Electric Forced air
Cooling	Central air conditioning

Exterior

Exterior	Concrete
----------	----------

Listing Details

Listing Office	RE/MAX ADVANCE REALTY
----------------	-----------------------

MLS®, REALTOR®, and the associated logos are trademarks of The Canadian Real Estate Association.