

\$467,850 - 113, 285 Chelsea Court, Chestermere

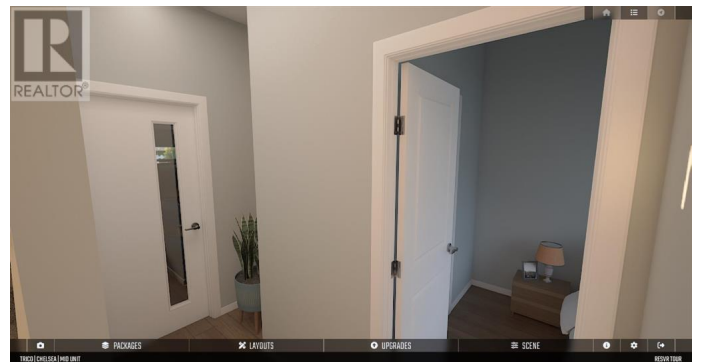
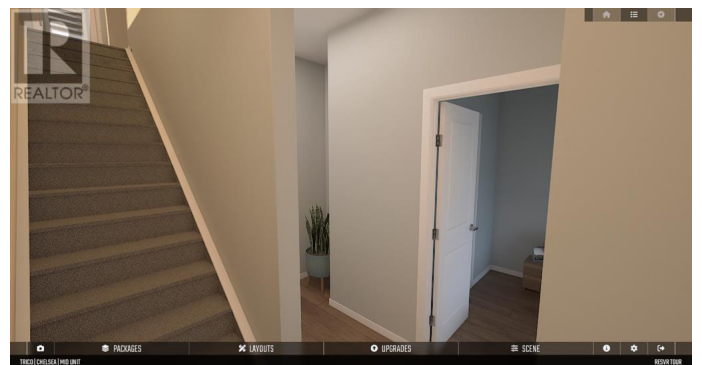
MLS® #A2191796

\$467,850

2 Bedroom, 4.00 Bathroom, 1,344 sqft
Single Family on 0 Acres

Chelsea_CH, Chestermere, Alberta

Step into the beautifully designed Regent floorplan, a stunning 2-bedroom + flex room, 3.5-bath townhome that blends modern luxury with everyday convenience. Located in the desirable Chelsea community, this Trico Homes masterpiece offers an ideal combination of style, functionality, and comfort – perfect for those seeking a sophisticated and low-maintenance lifestyle. This particular unit comes in the Moonlight colour palette and has been tastefully upgraded featuring: LVP flooring throughout, a flex room with an attached 3-piece bathroom, A/C rough-ins, a semi-built-in kitchen, flush-mounted LED lights in the great room and a gas line to the deck! The open-concept design of the Regent effortlessly integrates spacious living areas, creating a welcoming atmosphere for both relaxation and entertaining. Upon entry, you are greeted by a single-car garage, a generously sized flex room with an attached 3-piece bathroom and a foyer that leads you to the second floor, where you’ll find a sleek 2-piece powder room for added convenience. The upgraded semi-built-in kitchen is a true showstopper, featuring contemporary finishes, ample counter space, and modern appliances, making it perfect for meal prep and gatherings. The adjacent dining area and expansive great room flow seamlessly into one another, creating the perfect space for family dinners or hosting friends. Step out onto the private deck, ideal for enjoying your morning coffee in peace. The upper floor of the home boasts



upgraded LVP flooring throughout, giving the space a polished, modern feel. Two spacious master bedrooms await, each with its own luxurious ensuite bathroom and walk-in closet. Whether you're relaxing after a long day or hosting guests, these private retreats offer the perfect balance of style and comfort. Located in the sought-after Chelsea community, you'll enjoy easy access to Chestermere Lake, Lakeside Greens Golf Course, Easthills shopping centre, schools, and all the best amenities the area has to offer. Don't miss the opportunity to make this stylish and functional townhome your own. (id:6289)

Essential Information

Listing #	A2191796
Price	\$467,850
Bedrooms	2
Bathrooms	4.00
Half Baths	1
Square Footage	1,344
Acres	0.04
Type	Single Family
Sub-Type	Row / Townhouse

Community Information

Address	113, 285 Chelsea Court
Subdivision	Chelsea_CH
City	Chestermere
Province	Alberta
Postal Code	T1X2W7

Amenities

Amenities	Schools, Shopping
Features	Other, Gas BBQ Hookup, Parking
Parking Spaces	1
Parking	Attached Garage
# of Garages	1

Interior

Appliances Refrigerator, Oven - Electric, Range - Electric, Dishwasher, Microwave, Hood Fan, Garage door opener, Washer & Dryer, Water Heater - Tankless

Heating Forced air

Cooling See Remarks

of Stories 3

Exterior

Foundation Poured Concrete

Listing Details

Listing Office Century 21 Bravo Realty

MLS®, REALTOR®, and the associated logos are trademarks of The Canadian Real Estate Association.