

\$ - 1-lot 70 1800 Trowsse Rd, Malahat

MLS® #989795

\$

0 Bedroom, 0.00 Bathroom,
Industrial

Mill Bay, Malahat, British Columbia

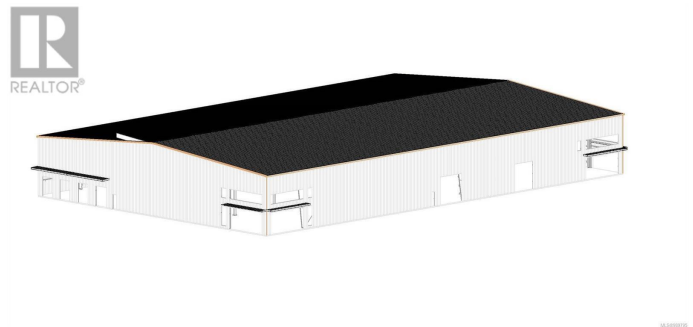
Opportunity to pre-lease a +/- 25,000 SQFT pre-engineered steel warehouse unit with Highway (TC-1) access in Mill Bay, BC. Strategically positioned along the Malahat Drive corridor, the Malahat Business Park (MBP) offers unparalleled accessibility and connectivity between the Capital Regional District and the rest of Vancouver Island. This prime location provides exceptional visibility and logistical advantages, making it an ideal destination for industrial, commercial, and distribution-focused businesses seeking a strategic foothold in the region. Offering consists of +/-24,000 SQFT warehouse, +/- 2,000 SQFT office, Four (4) x Dock Level loading, One (1) x Grade Level loading bay, and 43 parking stalls. Opportunity to combine two units to create +/- 40,000 SQFT warehouse. Estimated completion and occupancy - Q1 2026. (id:6289)

Essential Information

Listing #	989795
Bathrooms	0.00
Type	Industrial

Community Information

Address	1-lot 70 1800 Trowsse Rd
Subdivision	Mill Bay
City	Malahat
Province	British Columbia



Postal Code V0R2P4

Amenities

Parking Spaces 43

Interior

Heating Electric

Additional Information

Zoning Unknown

Listing Details

Listing Office JBW Commercial Inc.

MLS®, REALTOR®, and the associated logos are trademarks of The Canadian Real Estate Association.