

\$1,995,000 - 1605 Mesa Vista Drive, Ashcroft

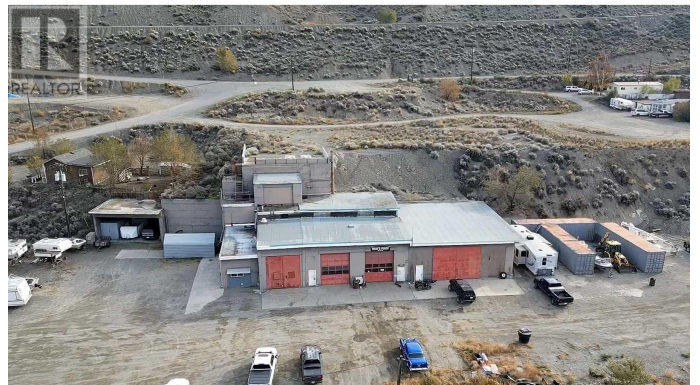
MLS® #180428

\$1,995,000

0 Bedroom, 0.00 Bathroom,
Industrial on 5 Acres

Ashcroft, Ashcroft, British Columbia

Rarely available, this 4.72 acre industrial M1 zoned property is located in the heart of the Village of Ashcroft. With a variety of heavy, light and industrial service uses, this industrial parcel also has railway access, an existing shop and living spaces with excellent redevelopment potential. Fully tenanted. Underutilized, but in a perfect location looking over the gorgeous Thompson River. Ashcroft is a hotbed of economic development in the areas of housing, mining, manufacturing in support of both CP and CN rails and the new Terminal of 320 acres supporting bulk goods and containers. Ashcroft is the service center for many communities including Lytton, Clinton, Spences Bridge and Cache Creek. (id:6289)



Essential Information

Listing #	180428
Price	\$1,995,000
Bathrooms	0.00
Acres	4.72
Type	Industrial
Sub-Type	Other

Community Information

Address	1605 Mesa Vista Drive
Subdivision	Ashcroft
City	Ashcroft

Province British Columbia

Postal Code V0K1A0

Amenities

Features Level lot, See remarks

Interior

Heating No heat

Exterior

Exterior Features Level

Additional Information

Zoning Unknown

Listing Details

Listing Office Royal LePage Westside Klein Group

MLS®, REALTOR®, and the associated logos are trademarks of The Canadian Real Estate Association.