

\$ - 1328 Topsail Road Unit#d, Paradise

MLS® #1281988

\$

0 Bedroom, 0.00 Bathroom, 7,500 sqft
Business on 0 Acres

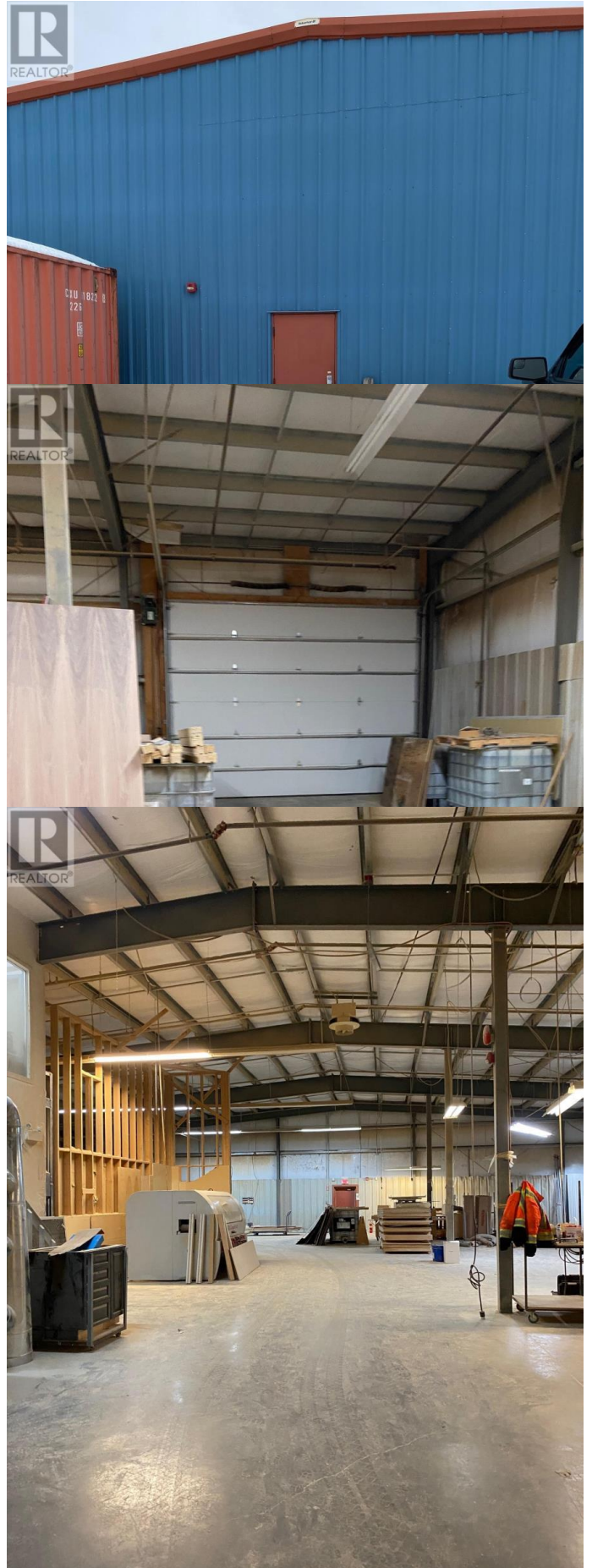
N/A, Paradise, Newfoundland & Labrador

FOR LEASE! 7500sqft of commercial warehouse space plus bonus mezzanine with 2 rooms that would be perfect for 2 offices and/or an office + lunchroom/boardroom, plus an additional space on the ground level that could be made into additional offices. The warehouse area has 15 foot ceilings approximately and a 12 foot high overhead door. Large public style washroom within the space. Tenant is responsible for their share of property/water taxes, business occupancy tax, heat & lights, maintenance within the space and for their share of the snow clearing/lawn maintenance. Any additional upfitting required will be at the expense of the tenant. Large shared parking lot at rear entrance. Town of Paradise Zoning for this space is Commercial General / Light Industrial. Viewings to take place Monday to Friday, 9AM - 4PM. Contact Today to Book Your Private Viewing!! (id:6289)

Built in 2010

Essential Information

Listing #	1281988
Bathrooms	0.00
Square Footage	7,500
Acres	0.00
Year Built	2010
Type	Business
Sub-Type	Other



Community Information

Address 1328 Topsail Road Unit#d
Subdivision N/A
City Paradise
Province Newfoundland & Labrador
Postal Code A1L1P2

Interior

Heating Electric
of Stories 1

Exterior

Lot Description 119.74 x 1642.33 x 88.29 x 1635.67|1 - 3 acres

Listing Details

Listing Office Royal LePage Property Consultants Limited

MLS®, REALTOR®, and the associated logos are trademarks of The Canadian Real Estate Association.